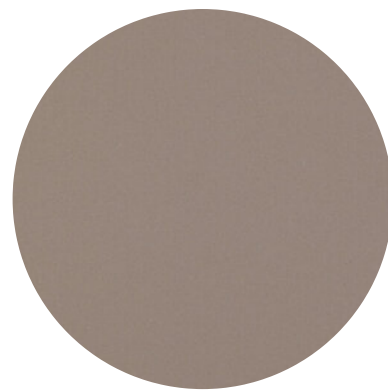


EXTREME TITAN

The Extreme collection consists of pure quartz, structural polyester resin and UV-stabilised colour pigments. The Extreme Titan surface has a uniform background and an extra fine grain, all brown in colour.



Format Standard

305 cm x 140 cm (4.27 sqm)
120" x 55" (45.96 sqft)

Thicknesses | Weights*

1.2 cm x 1/2" | 125 kg - 275 lb
2 cm x 3/4" | 208 kg - 459 lb
3 cm x 1 1/4" | 312 kg - 688 lb

Finish

polished, matt

* The indicated weight can vary by about 5% due to the different weight specific for the various classes of product.

Category: 2

| | | | |
|--|-----------------------------------|---|-----------------------|
| Apparent density EN 14617-1:2013 | kg/cm ³ | 2368 | W3 (EN 15285:2008) |
| Water absorption EN 14617-1:2013 | % | 0,04 - 0,07 | W4 |
| Flexural strenght EN 14617-1:2016 | Mpa | 70.1 | F4 (EN 15285:2008) |
| Compressive strenght EN 14617-15:2006 | Mpa | 232 | |
| Impact resistance EN 14617-9:2005 | J | 9.2 | |
| Linear thermal expansion EN 14617-11:2005 | 10 ⁻⁶ °C ⁻¹ | 37.7 | |
| Chemical resistance (HCl and NaOH) EN 14617-10:2012 | Classe | C4 for hydrochloric acid C4 for sodium hydroxide | |
| Abrasion resistance EN 14617-:2012 | mm | 29.6 | A3 (EN 15285:2008) |
| Slip resistance by means of the pendulum tester (polished finish) EN 14231-:2003 | | SRVdry= 47 SRVwet= 4 | |

Certifications



Quartzforms SpA

Bruger Str. 10 D-39126 Magdeburg, tel +49 (0) 39 1 53 888 000, fax +49 (0) 39 1 53 888 010

info@quartzforms.com www.quartzforms.com

Colours and brightness of video and printed reproductions are indicative.

The slab simulates natural stone so, some changes are possible in the final product.