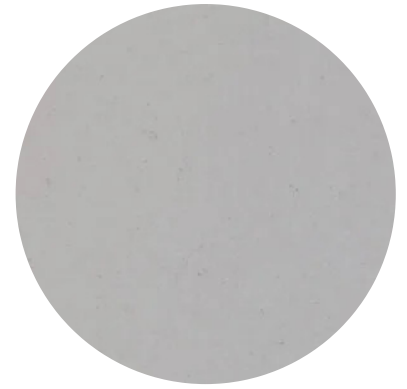


FOSSIL SEASHELL

The Fossil collection consists of pure quartz, structural polyester resin and UV-stabilised colour pigments. The Fossil Seashell surface has a uniform light grey background, a fine grain and widespread dark veins.



Format Jumbo

320 cm x 164 cm (5.25 sqm)
126" x 64.5" (56.51 sqft)

Thicknesses | Weights*

2 cm x 3/4" | 258 kg - 569 lb
3 cm x 1 1/4" | 387 kg - 853 lb

Finish

polished, matt

* The indicated weight can vary by about 5% due to the different weight specific for the various classes of product.

Category: 3

Apparent density EN 14617-1:2013	kg/cm ³	2392	W3 (EN 15285:2008)
Water absorption EN 14617-1:2013	%	0,04 - 0,07	W4
Flexural strenght EN 14617-1:2016	Mpa	46.2	F4 (EN 15285:2008)
Compressive strenght EN 14617-15:2006	Mpa	204	
Impact resistance EN 14617-9:2005	J	6.9	
Linear thermal expansion EN 14617-11:2005	10 ⁻⁶ °C ⁻¹	29.1	
Chemical resistance (HCl and NaOH) EN 14617-10:2012	Classe	C4 for hydrochloric acid C4 for sodium hydroxide	
Abrasion resistance EN 14617-:2012	mm	28	A4 (EN 15285:2008)
Slip resistance by means of the pendulum tester (polished finish) EN 14231-:2003		SRVdry= 44 SRVwet= 4	

Certifications



Quartzforms SpA

Burger Str. 10 D-39126 Magdeburg, tel +49 (0) 39 1 53 888 000, fax +49 (0) 39 1 53 888 010
info@quartzforms.com www.quartzforms.com

Colours and brightness of video and printed reproductions are indicative.

The slab simulates natural stone so, some changes are possible in the final product.